



240 Sheoak Road Judbury TAS

4 3 5

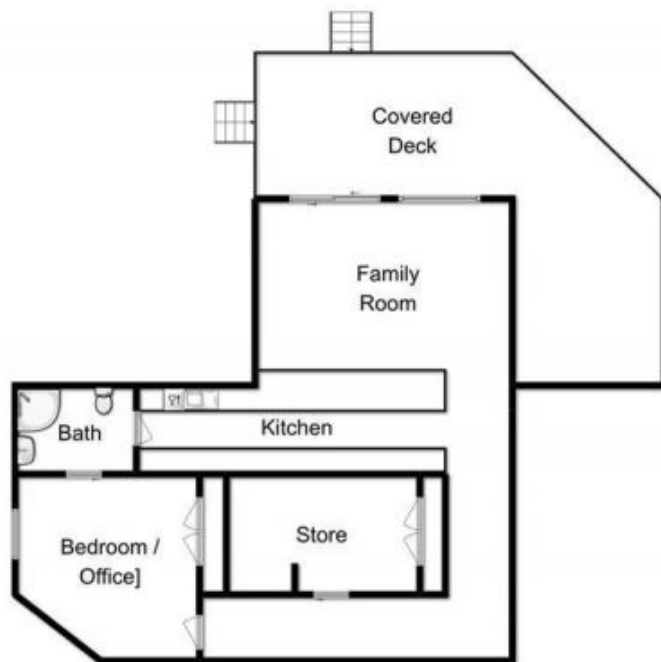
Luxury has a new address and you can find it on the edge of one of the most pristine large wild rivers in Australia. Waratah Park has been architecturally designed in true passive solar, eco style, with nature as the inspiration and the river and the sun as the focus. A blend of specialty timbers and some rendered masonry are perfectly assembled with expansive windows in a variety of angles which create the most interesting and unique, yet entirely practical and functional residence.

Situated on 15 acres of fenced pastureland with towering eucalypts and delightful easy maintenance gardens, there is only the usual crown reserve separating the home from edge of the fourth largest river in the state. Directly in front of the private home you can walk up and down hundreds of metres of river stones enjoying the peace and tranquillity of the deep pools or cast your line for the challenge of the

Building Size : 320 sqm
Land Size : 63140 sqm
View : <https://www.taspr.com.au/1462771>



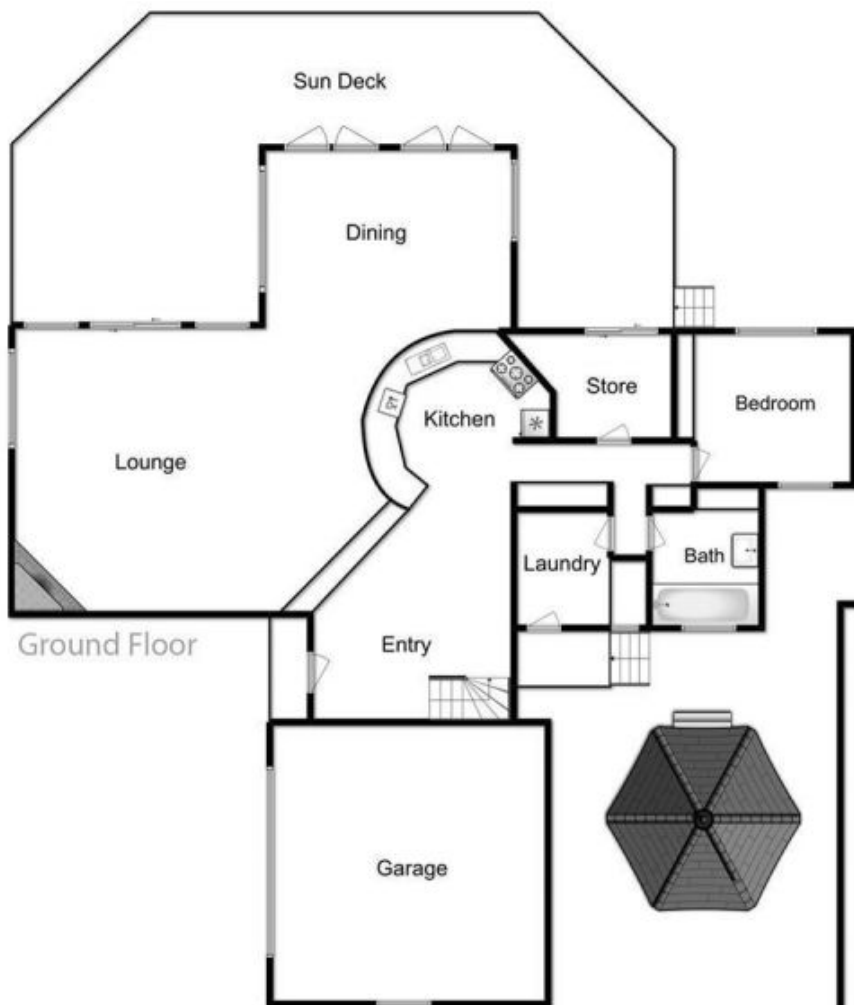
Maree Oost
03 6264 2888



Lower Ground Floor



First Floor



Ground Floor



Farm Shed / Workshop

