



21 Sunset Drive Garden Island Creek TAS

4  1  4 

Situated approx 50m across the road from the beautiful beach of Garden Island Sands, this 2 bedroom cottage + 2 bedroom sleep-out would make an ideal holiday home or sea change getaway.

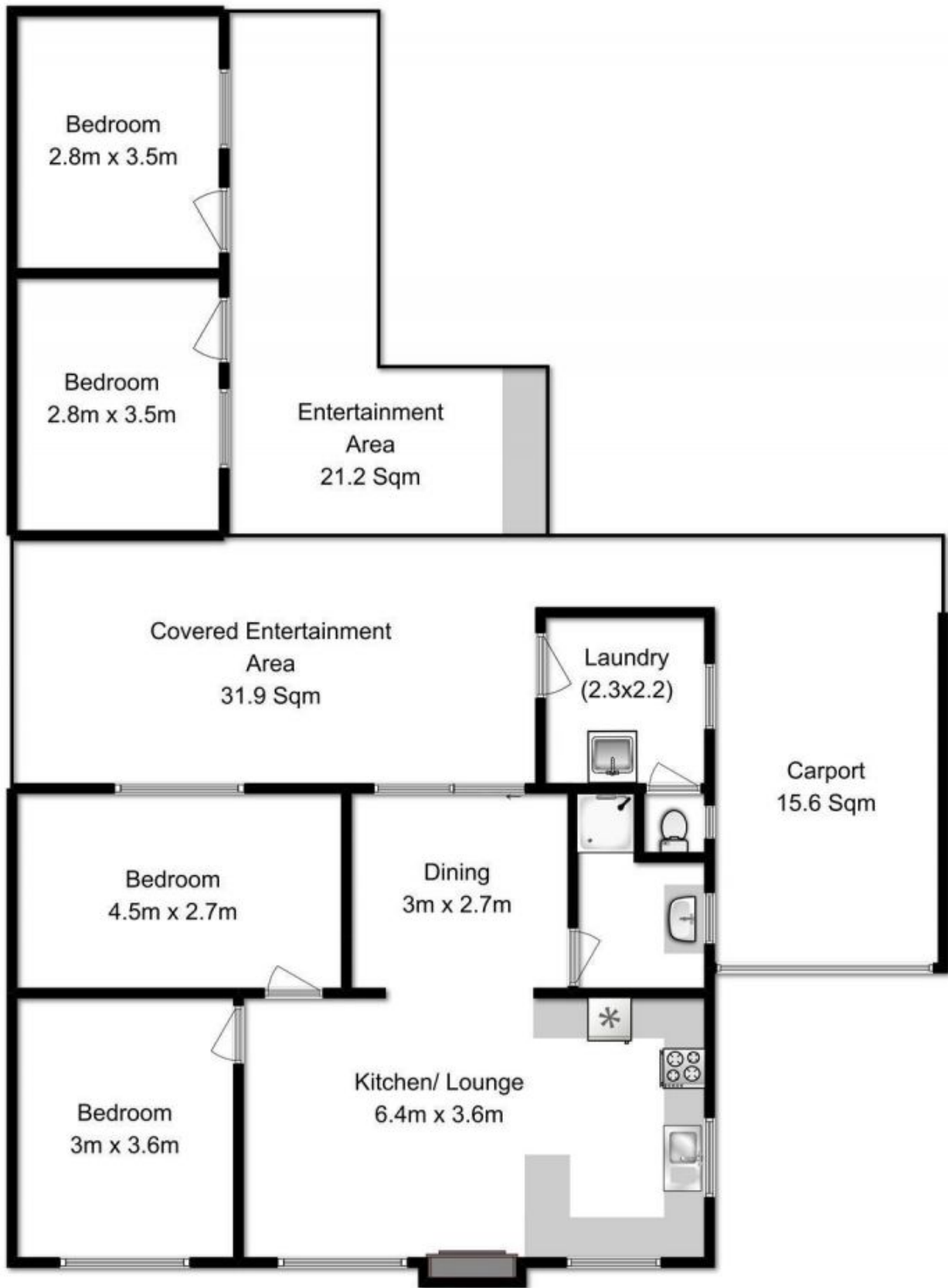
Building Size : 155 sqm
Land Size : 670 sqm
View : <https://www.taspr.com.au/1507589>

The home is cleverly centred around a partially enclosed alfresco area designed to maximise both summer and winter usage. There are two generous sized bedrooms in the main cottage with an additional 2 bedrooms attached and accessed via an undercover verandah. The cottage has an open plan feel with a central lounge dining and kitchen area with partial water views from the lounge area.



Maree Oost
03 6264 2888

For the winter months, this beach house has a central wood combustion heater combined with the covered and wind proofed outdoor area guarantees you year round comfort. The level block has easy care gardens and an



Approx Floor Area 154.8 Sqm

Fixtures & Fittings are for display only, not to scale.

Produced by open2view.com