



### 3 Kellaway Street Ranelagh TAS

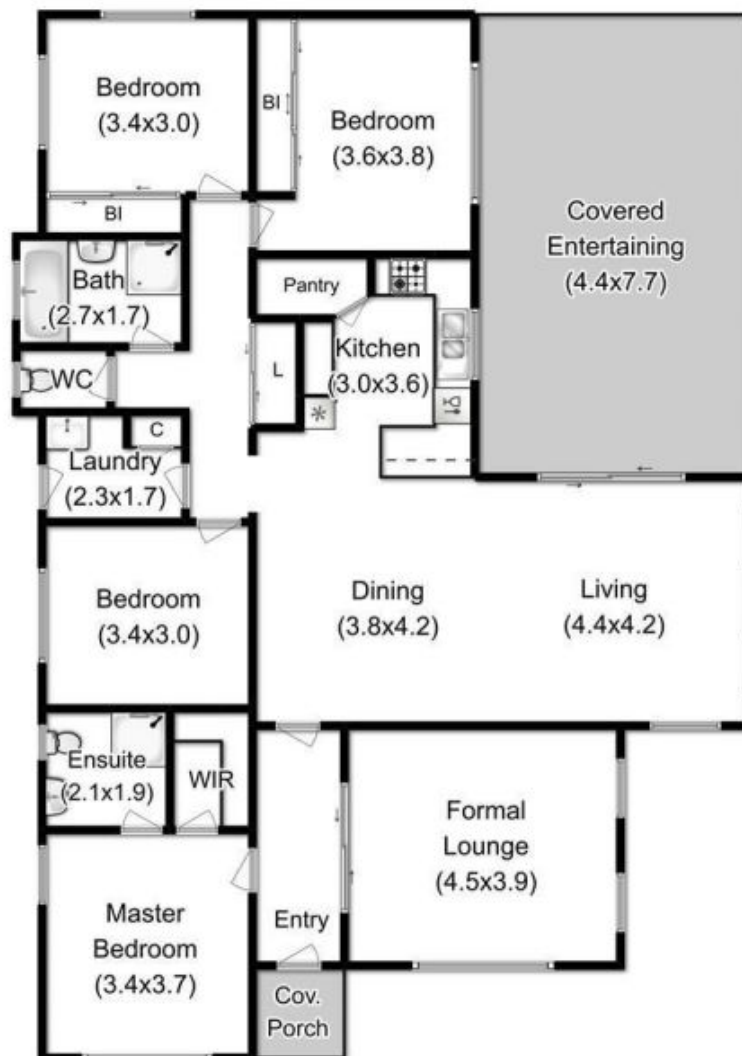
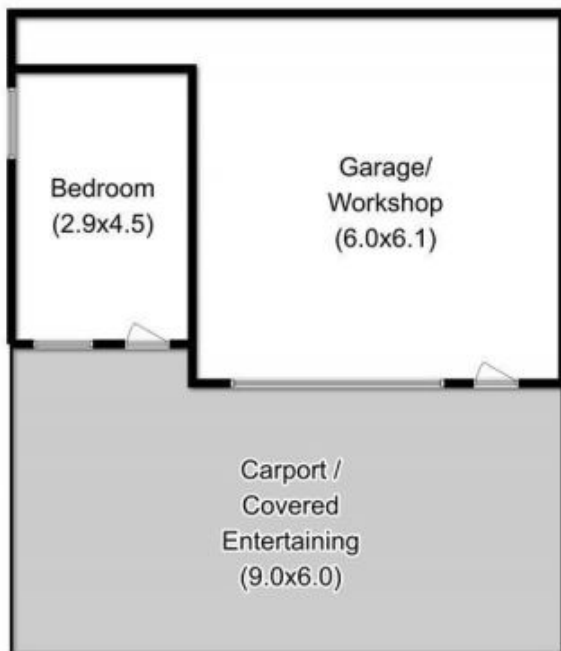
4 2 4

Immaculately presented, low maintenance, large family home, set on level fully fenced 840m2 block. Open plan kitchen, with stainless steel appliances, dining and lounge that opens up onto undercover courtyard. Separate family room. Master bedroom with ensuite and walk-in-robe with shelving and 3 bedrooms, two with BIR. Ducted heat-pump throughout the home. A huge garage/workshop with fully lined and insulated sleep-out and three bay carport, sealed driveway and fully fenced yard. Lovely established gardens compliment this stunning home.

**Building Size** : 161 sqm  
**Land Size** : 884 sqm  
**View** : <https://www.taspr.com.au/2034324>



**Maree Oost**  
**03 6264 2888**



Total Approx. Floor Area : 150 sqm  
Total Approx. Outbuilding Area : 54 sqm

All measurements are internal and approximate.  
This plan is a sketch for illustration, not valuation.  
Produced by Open2view.com