



52 Glenbervie Road Dover TAS

3 1 4

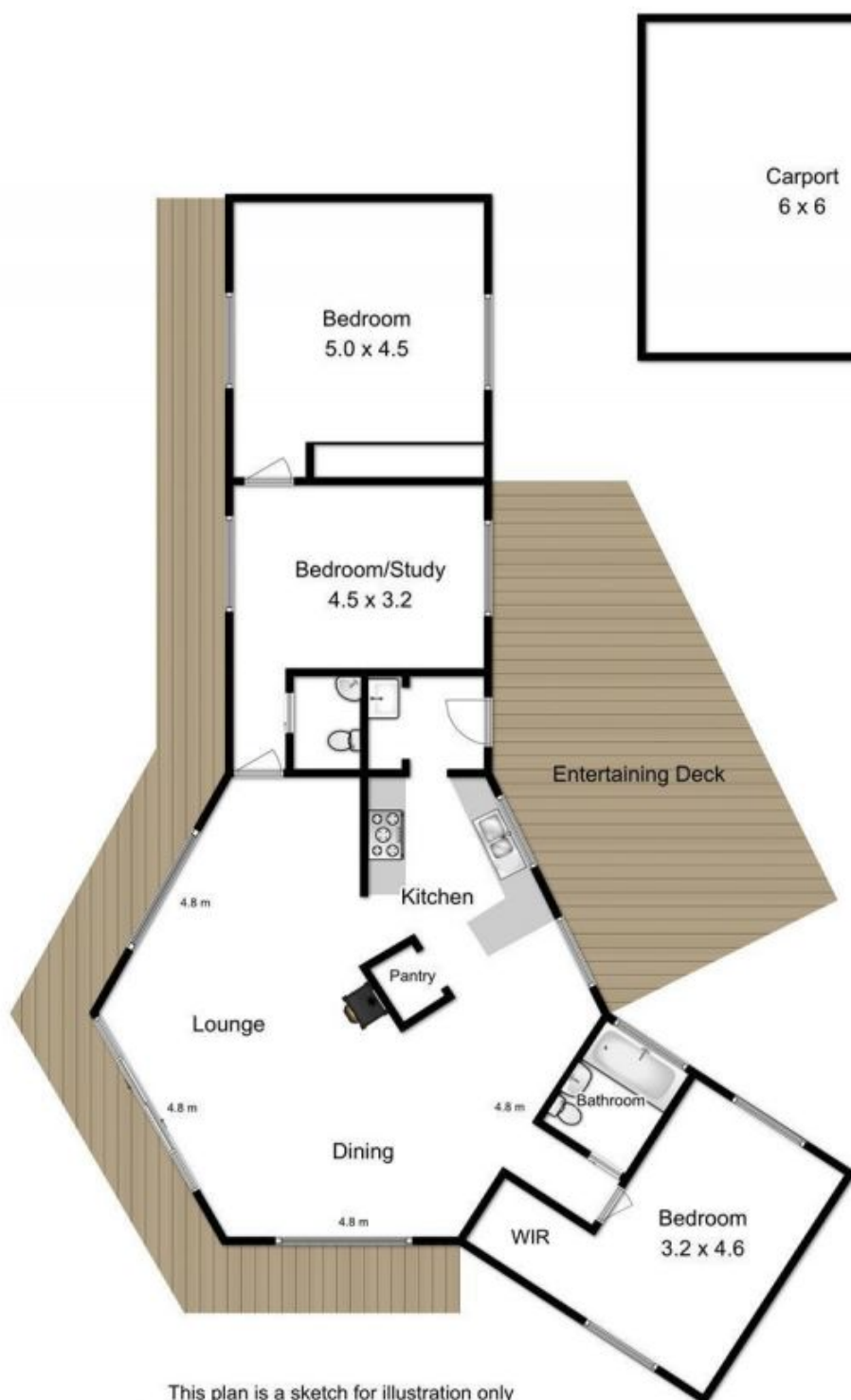
Nestled in a private bushland setting is this beautifully appointed home on approx. 10 Acres of pristine forest with views to the Esperance Bay!

The house has a unique Hexagonal open plan design meticulously built with cathedral ceilings in the main area with bedrooms/bathrooms/study in the adjacent wings. The lounge area is an oasis of tranquillity with floor to ceiling windows looking out over the private gardens. A central free standing fireplace for the cooler months, wrap around verandahs and covered entertainers deck for year round use. The new galley style kitchen is finished off with wood and stone bench tops with breakfast bar and stainless steel appliances. In the wings, the 2 main bedrooms are generously sized with plenty of built in robes and storage. The study could easily be turned into a third bedroom if required. The main bathroom is well appointed with the

Building Size : 110 sqm
Land Size : 40000 sqm
View : <https://www.taspr.com.au/2825860>



Maree Oost
03 6264 2888



This plan is a sketch for illustration only
 All measurements are internal & approximate
 Produced by open2view.com for TPT

