



4 Mariner Circle Huntingfield TAS

3 1 2

Immaculate, newly renovated 3 bedroom home, situated in a quiet central location. The home was built in 1992, and renovations include a new kitchen with stainless steel appliances, a new bathroom with separate bath, shower and vanity and brand new floor coverings, all with neutral tonings. The living areas are open plan and the aspect of the property allows all day sun to naturally warm the home. From the dining room, leading through the sliding door is a 40m2 timber deck, overlooking the rear established gardens and views beyond.

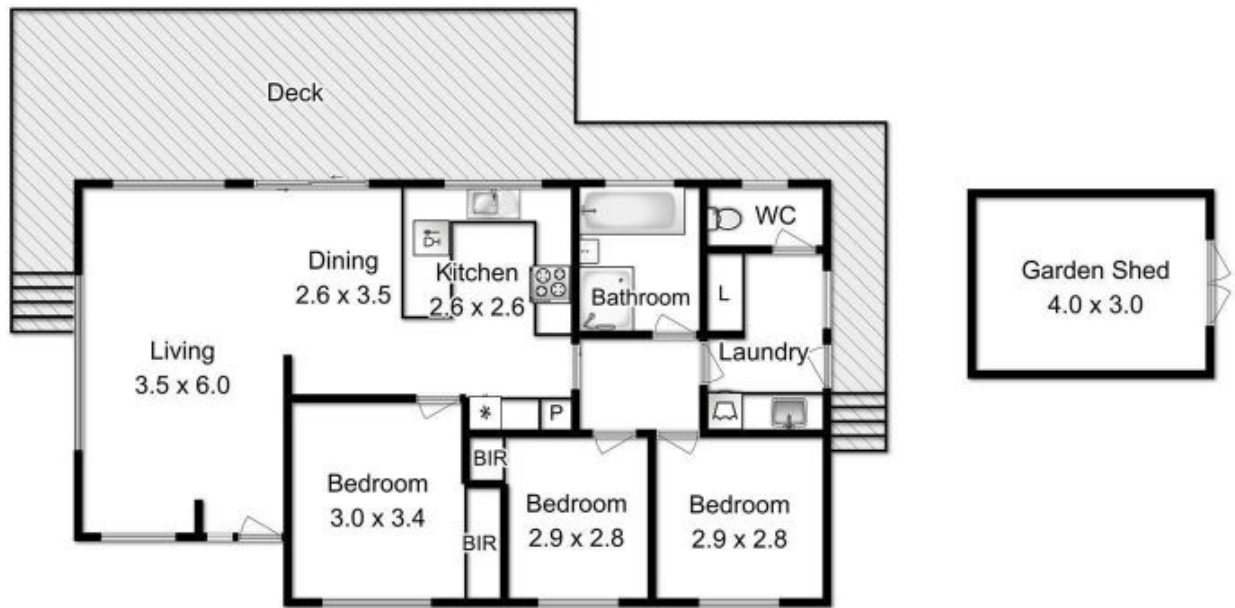
The land size is approximately 771m2 in size and is fully fenced. The front garden has established natives planted and there is also a garden shed for storage and room under the deck for additional storage.

Just across the road is a childrens park, shops and services are close by and the Hobart CBD is just a 15 minute drive.

Building Size : 99 sqm
Land Size : 771 sqm
View : <https://www.taspr.com.au/3476215>



Renee Vanson
03 6264 2888



Fixtures and fittings are for display only and not to scale.
 All measurements are internal and approximate.
 This plan is a sketch for illustration, not valuation.
 Produced by Open2view.com

Approx. house area: 91 sqm
 Approx outbuilding area: 12 sqm

