



2/4 Temperance Lane Franklin TAS

2 1 2

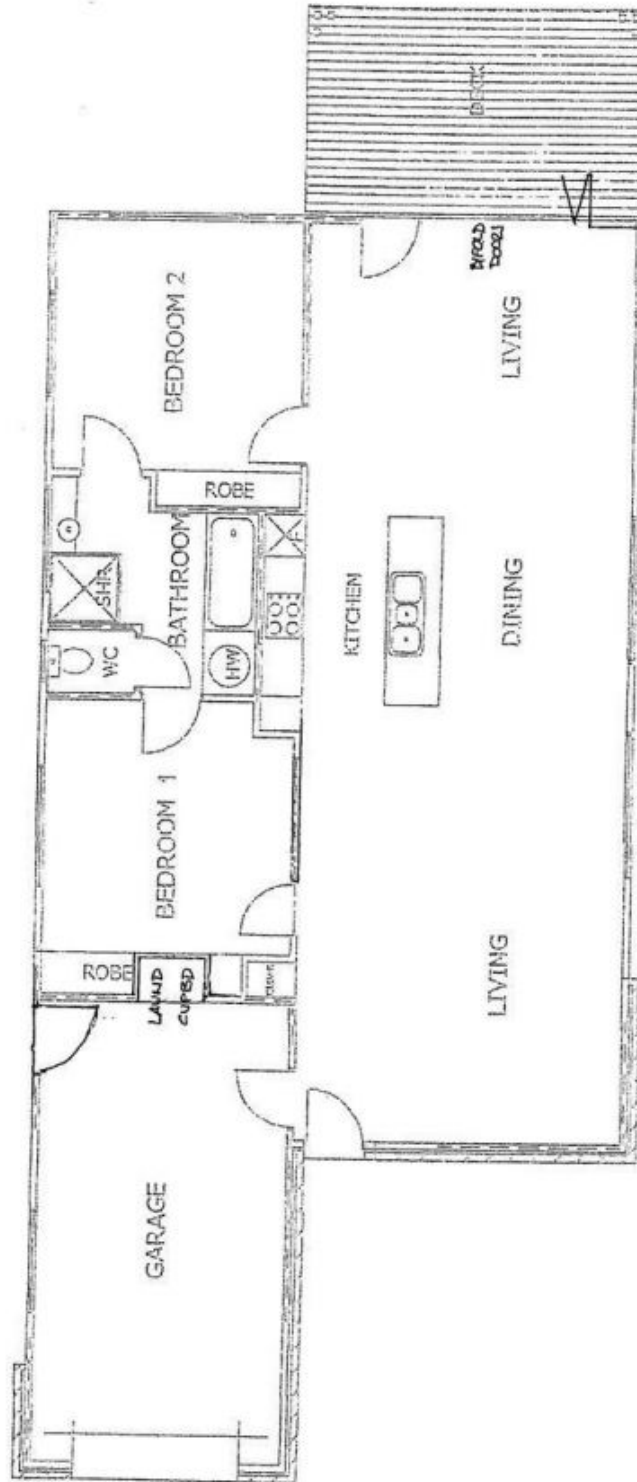
One of three new built passive-solar design Townhouses in a boutique development in the heart of Franklin.

With an open plan design running the full length of the house and fold back doors extending to the courtyard, the light streams through aided by the extra height and gallery windows. The central kitchen features a large island bench, stainless steel appliances and great storage which fit nicely with the large lounge and dining area. The private courtyard is well designed and decked for alfresco living. The bedrooms are both generous size with built in robes and a cleverly designed interconnecting bathroom with separate bath and glass shower. To complete the package, we have reverse cycle air-conditioning and a lock up garage with remote powered entry and internal access to the home. The property is well fenced at the rear for pets.

Building Size : 137 sqm
Land Size : 374 sqm
View : <https://www.taspr.com.au/3623260>



Maree Oost
03 6264 2888



LOWER FLOOR AREA 137.09m²