



18 Chapel Lane Dover TAS

3 2 3

Team Daniell is proud to present 18 Chapel Lane, Dover. This contemporary 2021 built home features three bedrooms, two bathrooms, a double garage, and a spacious entertaining area that offers a breathtaking view overlooking Port Esperance Bay.

Price : Offers Over \$695,000
Building Size : 112 sqm
Land Size : 809 sqm
View : <https://www.taspr.com.au/7943337>

The strategic positioning and open-plan design have been carefully considered to maximize both the scenic water views and the abundant natural sunlight.

This home encompasses the expected modern amenities of a newly built residence, showcasing a high-quality, expansive kitchen equipped with stainless steel appliances, ample storage, a gas cooktop/oven, and breakfast bar.

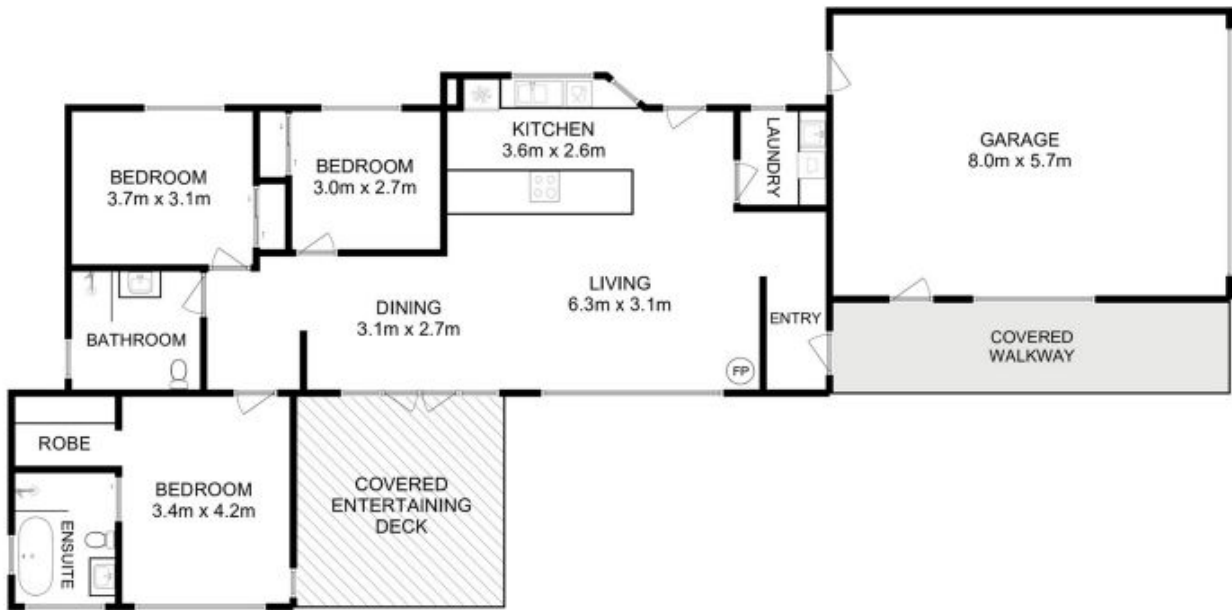


Danielle Daniell
03 6264 2888



Rick Daniell
03 6264 2888

The immaculate open-plan living and dining area is a standout feature, flooded with natural sunlight and



Total Approx. Floor Area (Incl. Garage) : 161 sqm



All measurements are internal and approximate.
This plan is a sketch for illustration, not valuation.
Produced by Open2view.com