



## 1004 Cygnet Coast Road Lower Wattle Grove TAS

3 1 4

This property offers a captivating blend of country charm and tranquil waterfront living, making it an ideal retreat for those seeking a serene lifestyle. Situated across from the majestic Huon River, the Circa 1908 weatherboard home exudes timeless elegance and has been meticulously maintained over the years.

Spanning a generous acreage, the residence boasts separate living zones, two spacious bedrooms, and a third single bedroom or study, providing ample space for relaxation and productivity. The spacious kitchen features abundant bench and storage space and is thoughtfully separated from the living areas for ease of use. The bathroom, complete with floor heating, ensures comfort during the winter months while retaining practicality.

Step outside onto the timber deck, accessible through

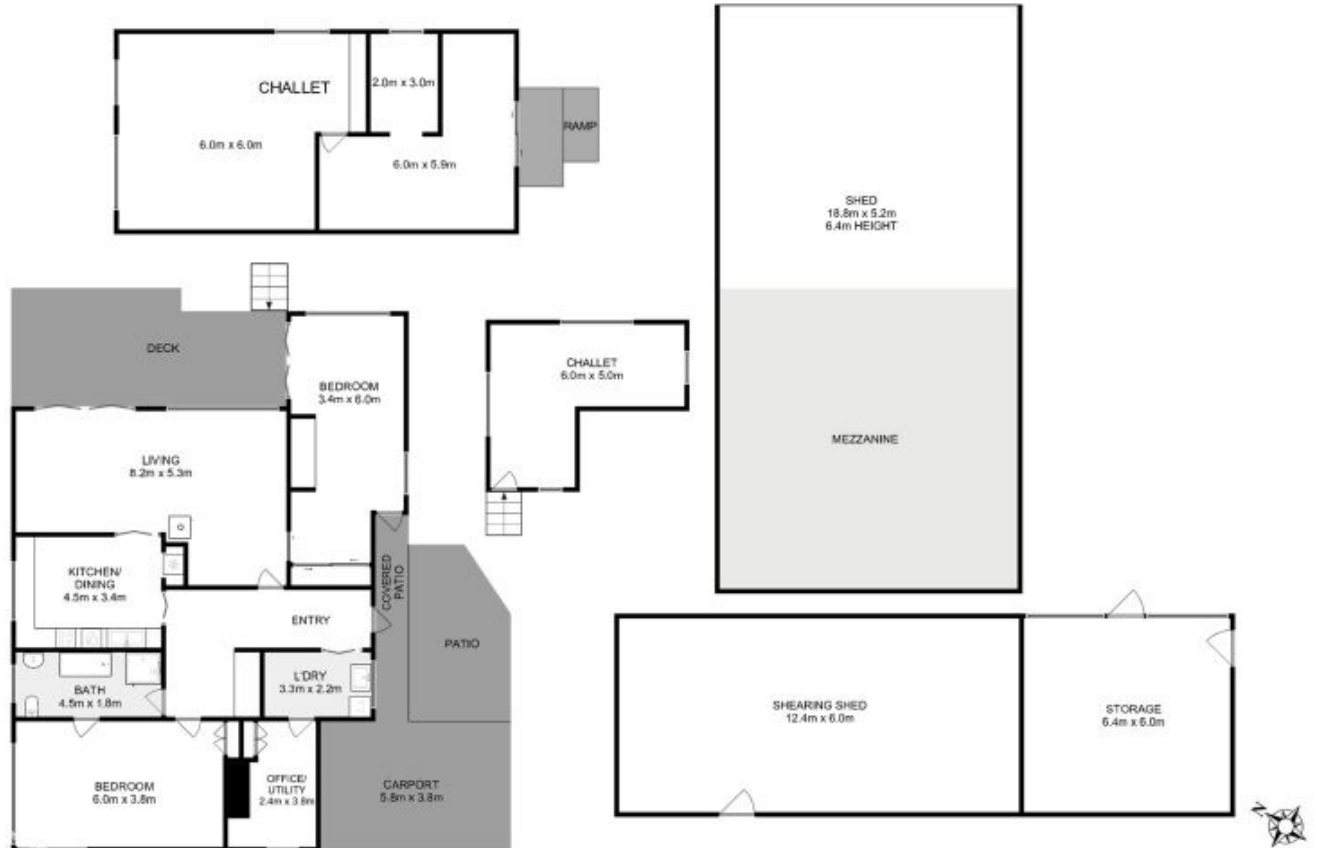
**Price** : Best Offer Over \$1,200,000  
**Building Size** : 141 sqm  
**Land Size** : 39430 sqm  
**View** : <https://www.taspr.com.au/7957966>



**Renee Vanson**  
**03 6264 2888**

<https://www.taspr.com.au>

(03) 6264 2888



Total Approx. Floor Area : 160 sqm  
 Total Approx. Outbuilding : 358 sqm

All measurements are internal and approximate.  
 This plan is a sketch for illustration, not valuation.  
 Produced by Open<sup>2</sup>view.com